

*Ramsha*<sup>®</sup>

VOL - 01



#R-265



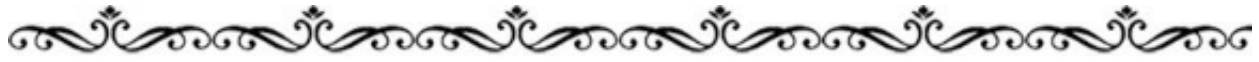
#R-266

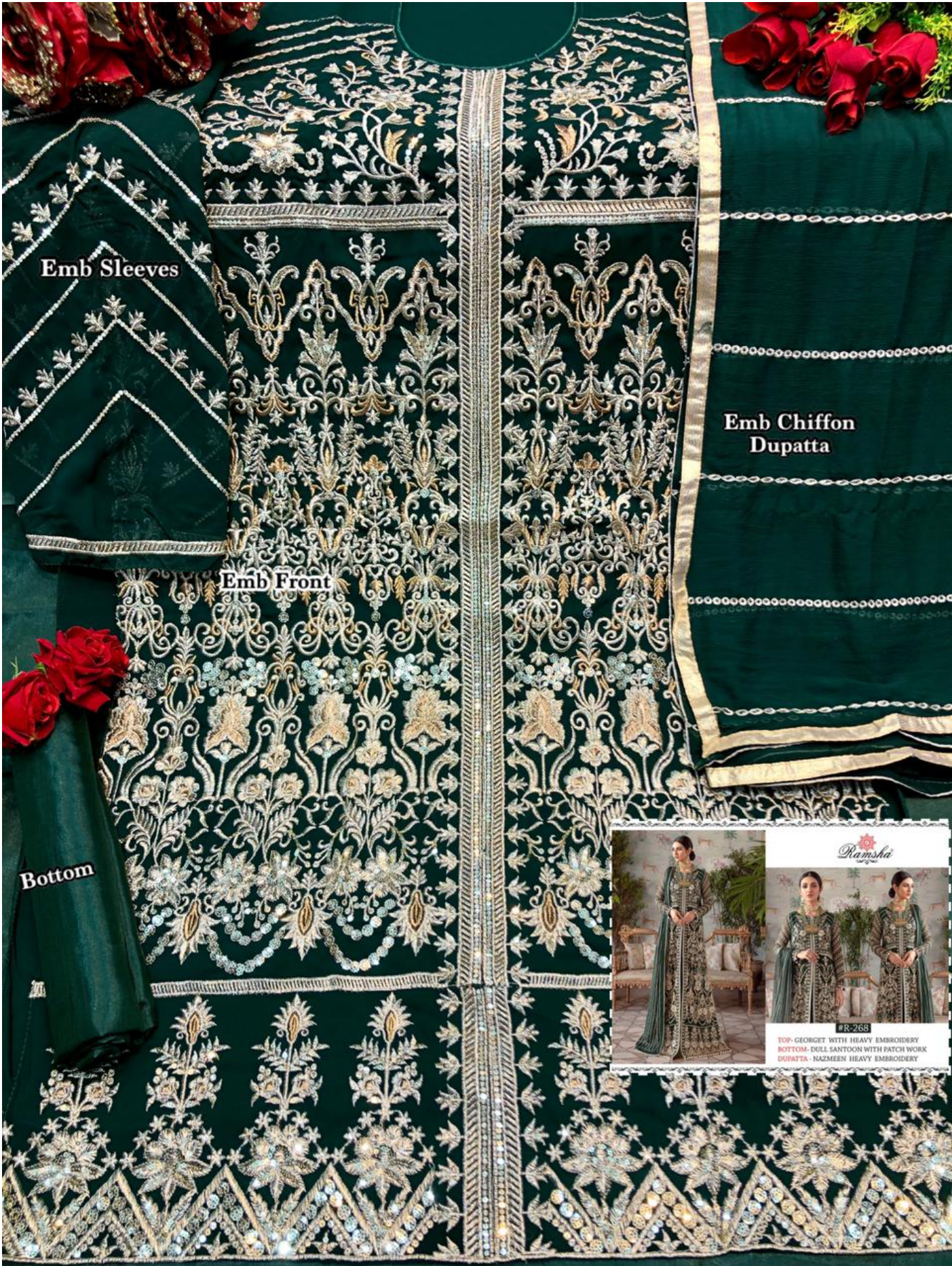


#R-267



#R-268





Emb Sleeves

Emb Front

Emb Chiffon Dupatta

Bottom



*Ramsha*

#R-268

TOP- GEORGETT WITH HEAVY EMBROIDERY  
BOTTOM- DULL SANTOON WITH PATCH WORK  
DUPATTA- NAZMEEN HEAVY EMBROIDERY



**Emb Sleeves**

**Emb Chiffon  
Dupatta**

**Emb Front**

**Bottom**



*Ramsha*

**TOP- BUTTERFLY NET WITH HEAVY EMBROIDERY**  
**BOTTOM- DULL SANTOON**  
**DUPATTA- NET WITH HEAVY EMBROIDERY**



Emb Sleeves

Emb Front

Emb Silk Dupatta

Bottom



Ramsha

#R-267

TOP: BUTTER FLY NET WITH HEAVY EMBROIDERY  
BOTTOM: DULL SANTOON  
DUPATTA: NET WITH HEAVY EMBROIDERY



**Emb Sleeves**

**Emb Net Dupatta**

**Emb Front**

**Bottom**



**Ramsha**

Ramsha®



#R-265

TOP- BUTTER FLY NET WITH HEAVY EMBROIDERY  
BOTTOM- DULL SANTOON  
DUPATTA - NET WITH HEAVY EMBROIDERY





#R-266

TOP- BUTTER FLY NET WITH HEAVY EMBROIDERY  
BOTTOM- DULL SANTOON  
DUPATTA - NET WITH HEAVY EMBROIDERY





#R-268

TOP- GEORGET WITH HEAVY EMBROIDERY  
BOTTOM- DULL SANTOON WITH PATCH WORK  
DUPATTA - NAZMEEN HEAVY EMBROIDERY

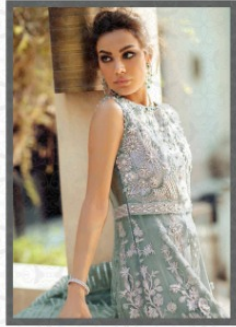




#R-267

TOP- BUTTER FLY NET WITH HEAVY EMBROIDERY  
BOTTOM- DULL SANTOON  
DUPATTA - NET WITH HEAVY EMBROIDERY





*Ramsha*<sup>®</sup>

VOL - 01



#R-265



#R-266



#R-267



#R-268