



D.no-184-I (Organza)



-:TOP:-

Organza Embroidery.

-:BOTTAM/INNER:-

Santoon.

-:DUPATTA:-

Heavy Embroidery With Four Side Lace.



D.no-184-I (Organza)



-:TOP:-

Organza Embroidery.

-:BOTTAM/INNER:-

Santoon.

-:DUPATTA:-

Heavy Embroidery With Four Side Lace.



D.no-184-L (Organza)



-:TOP:-

Organza Embroidery.

-:BOTTAM/INNER:-

Santoon.

-:DUPATTA:-

**Heavy Embroidery With Four
Side Lace.**



D.no-184-K (Organza)



-:TOP:-

Organza Embroidery.

-:BOTTAM/INNER:-

Santoon.

-:DUPATTA:-

Heavy Embroidery With Four Side Lace.



D.no-184-I



D.no-184-J



D.no-184-K



D.no-184-L

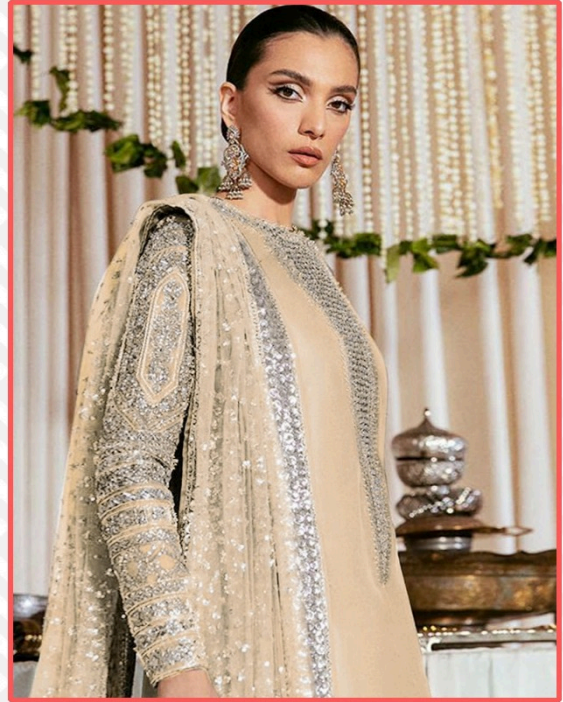
-:TOP:-
Organza Embroidery.

-:BOTTAM/INNER:-
Santoon

-:DUPATTA:-
Heavy Embroidery With Four
Side Lace.



D.no-184-J (Organza)



-:TOP:-

Organza Embroidery.

-:BOTTAM/INNER:-

Santoon.

-:DUPATTA:-

Heavy Embroidery With Four Side Lace.