

21303



21303

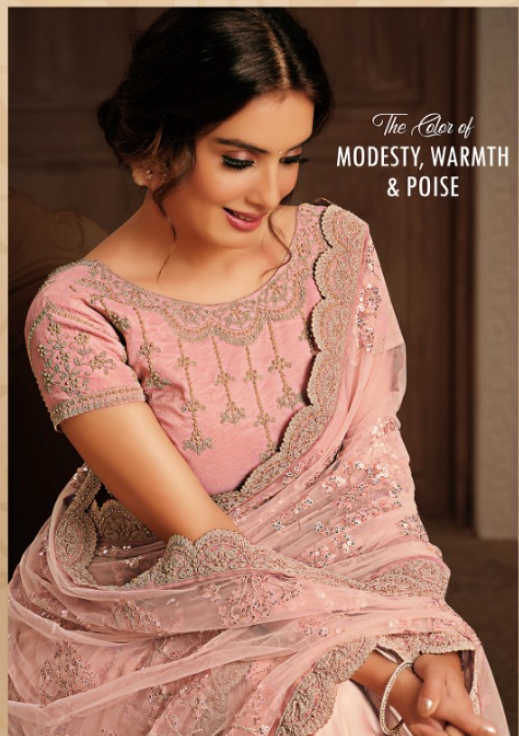


21308



The Color of
SERENITY, INSPIRATION
& CALMNESS





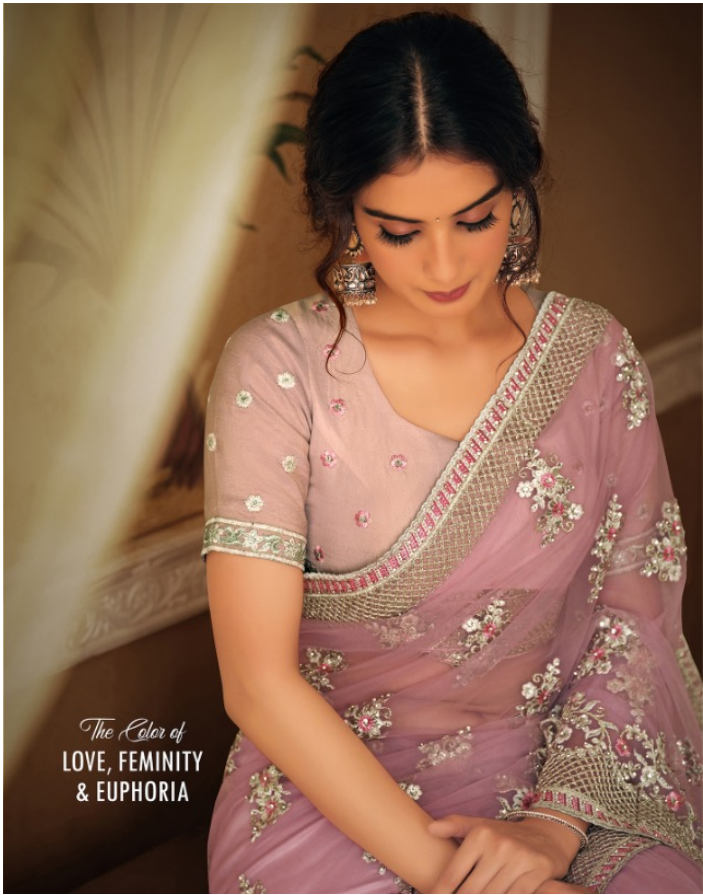
The Color of
**MODERNITY,
SOPHISTICATED
& ELEGANCE**





The Color of
**LIVELINESS, FRESHNESS
& CONFIDENCE**







The Color of
FEMININE GRACE,
ELEGANCE
& REFINEMENT



21306



21307



NOTE : 5% GST WILL BE CHARGED EXTRA ON THE BELOW PRICES

MOH-MANTHAN - 21300 SERIES - ERSHEEN

| DESIGN NO | PRICE | SAREE FABRIC | BLOUSE FABRIC | SAREE COLOR | BLOUSE COLOR | SAREE WORK |
|-----------|-------|----------------|-----------------------|--------------|--------------|---|
| 21303 | 3285 | Silk georgette | Silk Taffeta | Lime Green | Lime Green | Zari , cord and Sequins embroidery |
| 21304 | 4545 | Net | Silk | Pink | Pink | Resham, zari and cord embroidery, swarovski crystals handwork |
| 21305 | 3365 | Net | Silk Taffeta | Sea Green | Teal Green | Resham, zari and cord embroidery |
| 21306 | 2945 | Silk georgette | Silk Taffeta | Onion Pink | Onion Pink | Resham, zari and ribbon embroidery |
| 21307 | 3045 | Net | Silk | Greyish Pink | Peach | Resham, zari , cord and sequins embroidery |
| 21308 | 4625 | Net | Silk | Sea blue | Sea Blue | Resham, zari and cord embroidery, swarovski crystals handwork |
| 21309 | 3425 | Net | Silk | Peach | Peach | Cord and sequins embroidery |
| 21310 | 2945 | Silk georgette | Silk Taffeta | Grey | Grey | Resham, cord and sequins embroidery |
| 21311 | 5215 | Net | Dual tone Weaved Silk | Bluish Grey | Bluish-gold | Resham, zari and cord embroidery, swarovski crystals handwork |