



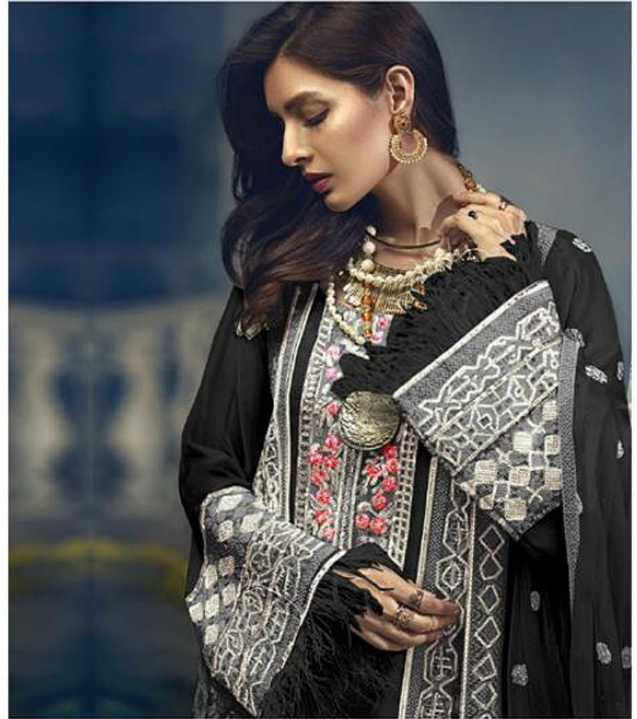
SHANAYA[®]





SHANAYA[®]





FABRIC DETAILS
TOP- FOX GEORGEETE
BOTTAM/INNER - SANTOON
DUPPTA- HEAVY NAZMEEN

S-43-G

WASHING INSTRUCTIONS
 DO NOT USE ANY TYPE OF BLEACH OR STAIN REMOVING CHEMICALS BEFORE CUTTING / STITCHING . FABRIC SHOULD BE SOAKED IN WATER (ALL COMPONENTS SEPARATELY) FOR 15 MINUTES
 DO NOT KEEP WET FABRIC IN TWISTED FROM IN ORDER TO AVOID COPY MARKS |
 WASH COLOURED AND WHITE FABRICS SEPARATELY
 IRON CLOTHES AT MODERATE TEMPERATURE | DO NOT DRY FABRIC IN DIRECT SUNLIGHT (EXTRA LACES, HANGINGS AND ACCESSORIES ARE NOT INLUDED)





SHANAYA



FABRIC DETAILS
100% POLYESTER
NETWEAVE, LAYERS
HOTEL BRUSH FINISH

S-43-G

SHANAYA

SHANAYA