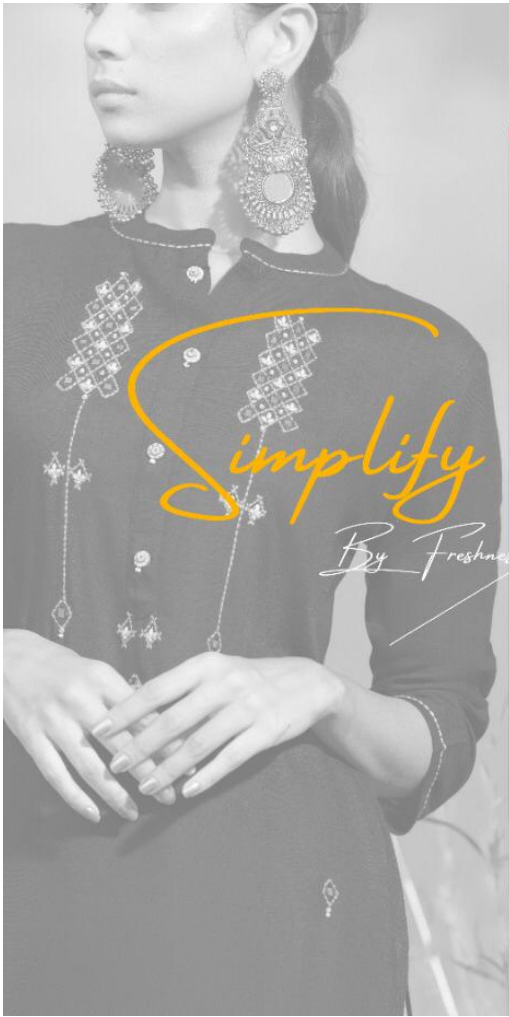


The image is a fashion catalog cover. It features two models standing in a field. The model on the left is wearing a dark green, long-sleeved, floor-length dress with a light-colored patterned hem. The model on the right is wearing a dark blue, long-sleeved, floor-length dress with a light blue patterned hem. They are standing in front of a series of wooden poles with colorful fabric (orange, red, yellow, green, white) draped over them, creating a decorative structure. The background is a clear blue sky and a field of dry grass. The 'psyna' logo is in the top right, and the 'Patazzo House Vol-11' text is in the bottom right.

psyna®

Patazzo House
Vol-11



psyna®



*grace yourself
with the fresh
designer wear
inspired from
the best
zones*

The image is a fashion catalog cover. It features two models standing in a field. The model on the left is wearing a dark green, long-sleeved, floor-length dress with a light-colored patterned hem. The model on the right is wearing a dark blue, long-sleeved, floor-length dress with a light blue patterned hem. They are standing in front of a series of wooden poles with colorful fabric (orange, red, yellow, green, white) draped over them, creating a decorative structure. The background is a clear blue sky and a field of dry grass. The 'psyna' logo is in the top right, and 'Patazzo House Vol-11' is in the bottom right.

psyna®

Patazzo House
Vol-11







*Chased
By Fashion*

*fashion is
always
changing
it always
a chasing game
between style
& fashion*

*Palazzo House
Din 11002*

psyna



psyna

Marvel Of Nature

Witness
the marvelous
design from
inspired by nature



Palazzo House
D-11005

psyna®



Fashion By Nature



*exploring
the spirit
of nature
& its essence
to inspire
the creations*



psyna

Beauty

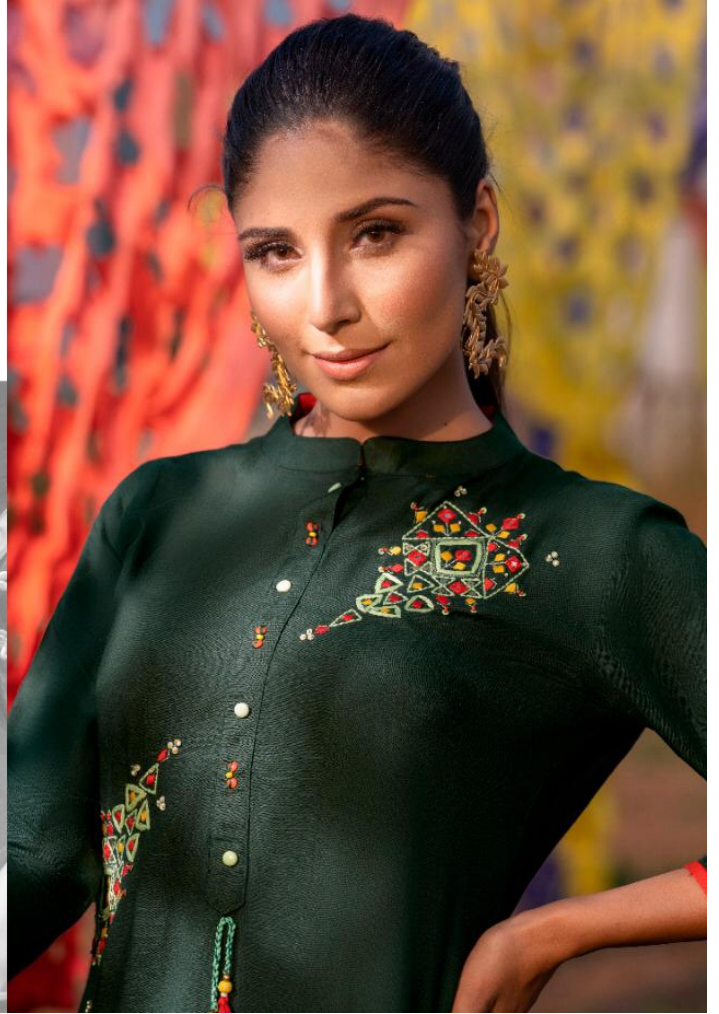
Of Creator

*when is
a woman's child
of the creator
good but
wonderful look
from the look.*



Palazzo House

Des. 11006







A collage of images for a fashion advertisement. The central image shows a woman in a dark blue, long-sleeved, floor-length dress with floral embroidery, standing in a field with a bicycle. The top right corner features a close-up of her face and jewelry. The text "psyna" is visible in the top right. The main text "Inspired By Nature" is written in a large, white, cursive font. At the bottom, "Peterson House" and "D no. 11007" are written in a smaller, white, cursive font.

psyna

Inspired
By Nature

Peterson House

D no. 11007

psyna®



D-11008

Palazzo House

Blossom In Style

Let your style
blossom
in the fullest
in the lap of nature



psyna®





Ds-11001

Ds-11002



Ds-11006

Ds-11007



Ds-11008

Ds-11001



Ds-11008

Ds-11009



Ds-11005



Ds-11010

psyna®

Patazzo House