



D.NO.41005

**ROSEMEEN
CARNIVAL**

FABRIC DETAIL
 TOP-GEORGETTE
 INNER-SANTOON
 BOTTOM-SANTOON
 DUPATTA-NAZMEEN

WASHING INSTRUCTIONS
 DO NOT USE ANY TYPE OF BLEACH OR STAIN REMOVING CHEMICALS
 BEFORE CUTTING / STITCHING , FABRIC SHOULD BE SOAKED BE SOAKED IN WATER
 (ALL COMPONENTS SEPARATELY) FOR 15 MINUTES
 DO NOT KEEP WET FABRIC IN TWISTED FROM IN ORDER TO AVOID COPY MARKS |
 WASH COLOURED AND WHITE FABRICS SEPARATELY
 IRON CLOTHES AT MODERATE TEMPERATURE | DO NOT DRY FABRIC IN DIRECT SUNLIGHT
 (EXTRA LACES, HANGINGS AND ACCESSORIES ARE NOT INDUDED)



QR



Fepic™

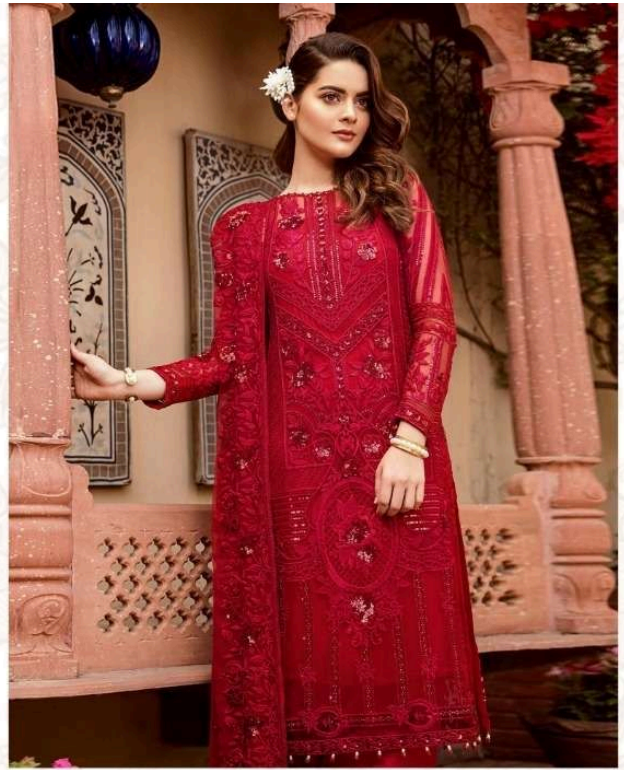
Carnival
Hit Piece



Sleeves

Bottom N patch

Dupatta



D.NO.41005

**ROSEMEEN
CARNIVAL**



QR

FABRIC DETAIL
 TOP-GEORGETTE
 INNER-SANTOON
 BOTTOM-SANTOON
 DUPATTA-NAZMEEN

WASHING INSTRUCTIONS
 DO NOT USE ANY TYPE OF BLEACH OR STAIN REMOVING CHEMICALS
 BEFORE CUTTING / STITCHING , FABRIC SHOULD BE SOAKED BE SOAKED IN WATER
 (ALL COMPONENTS SEPARATELY) FOR 15 MINUTES
 DO NOT KEEP WET FABRIC IN TWISTED FROM IN ORDER TO AVOID COPY MARKS |
 WASH COLOURED AND WHITE FABRICS SEPARATELY
 IRON CLOTHES AT MODERATE TEMPERATURE | DO NOT DRY FABRIC IN DIRECT SUNLIGHT
 (EXTRA LACES, HANGINGS AND ACCESSORIES ARE NOT INDUDED)