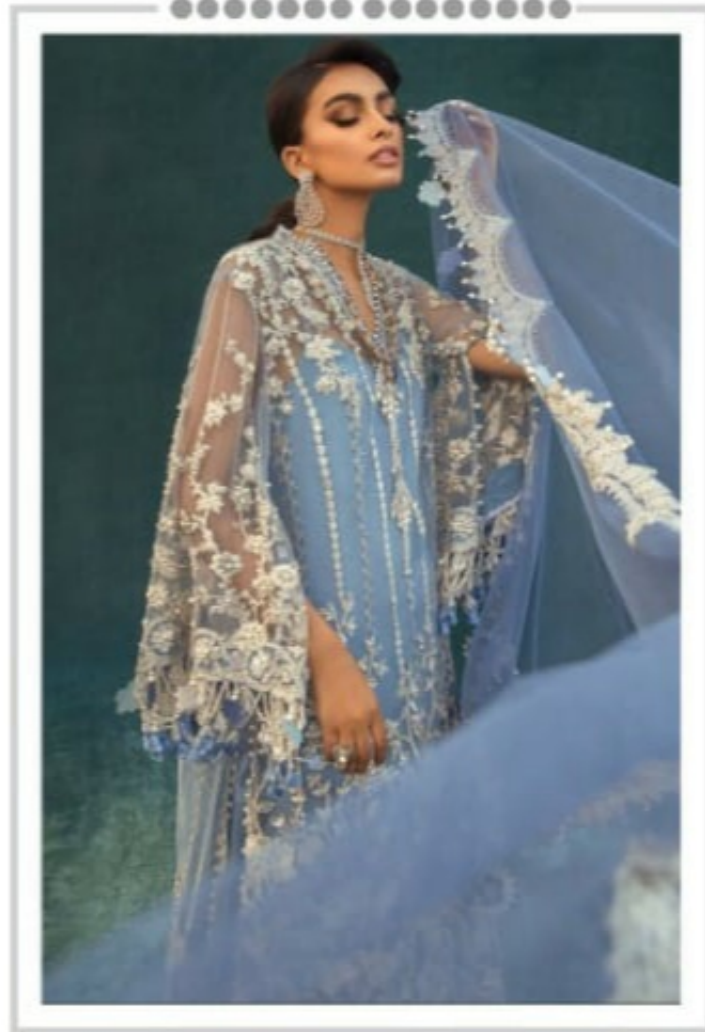
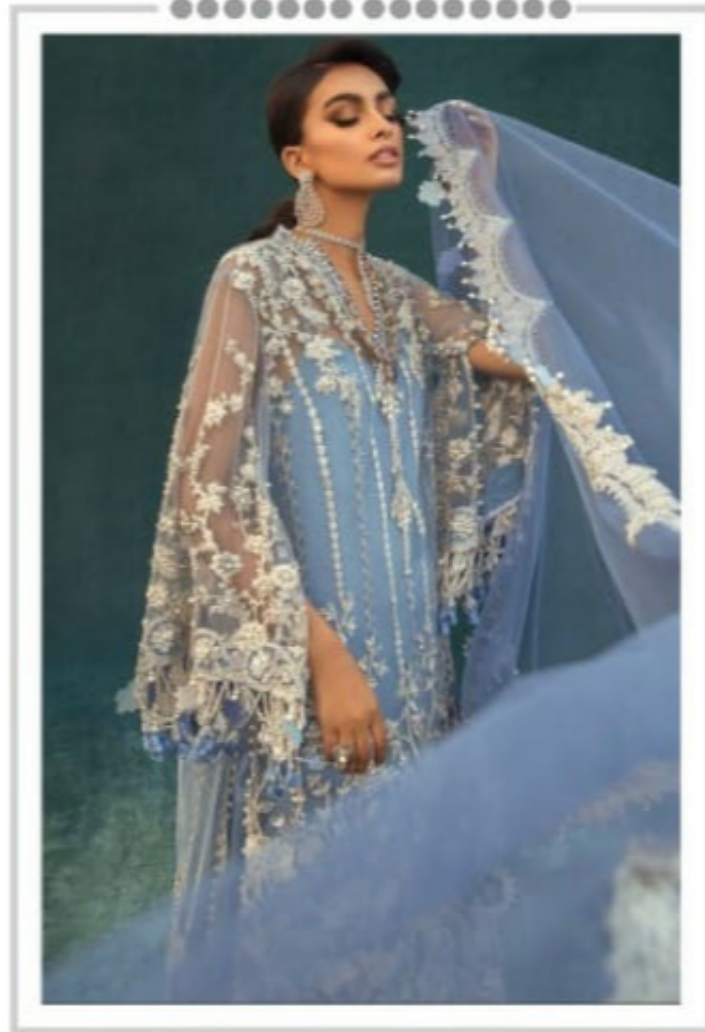



Ramsha[®]
VOL-22




Ramsha[®]
VOL-22



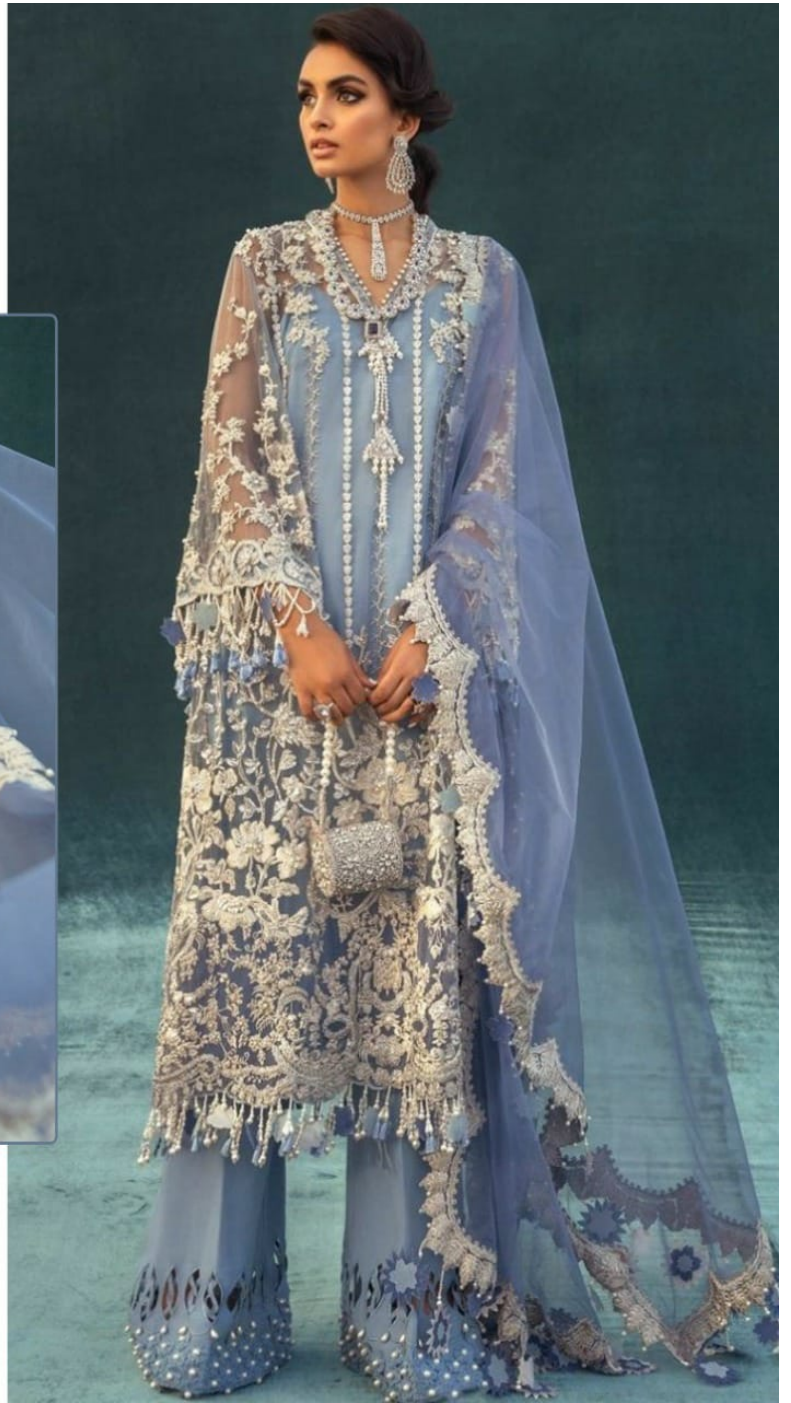


#R-353



TOP- BUTTER FLY NET WITH HEAVY EMBROIDERY
BOTTOM- DULL SANTOON
DUPATTA - NET WITH HEAVY EMBROIDERY

- Ⓟ DRY CLEAN ONLY.
- ✘ DO NOT USE ANY BLEACH OR STAIN REMOVING CHEMICAL.
- ☎ IRON THE FABRIC AT MODERATE TEMPERATURE.





#R-351



TOP- FOX GEORGET WITH HEAVY EMBROIDERY
BOTTOM- DULL SANTOON
DUPATTA - NAZMEEN WITH HEAVY EMBROIDERY



Ⓟ DRY CLEAN ONLY.
ⓧ DO NOT USE ANY BLEACH OR STAIN REMOVING CHEMICAL.
Ⓡ IRON THE FABRIC AT MODERATE TEMPERATURE.



#R-352



TOP- BUTTER FLY NET WITH HEAVY EMBROIDERY
BOTTOM- DULL SANTOON
DUPATTA - NET WITH HEAVY EMBROIDERY

- Ⓟ DRY CLEAN ONLY.
- ✘ DO NOT USE ANY BLEACH OR STAIN REMOVING CHEMICAL.
- ☎ IRON THE FABRIC AT MODERATE TEMPERATURE.





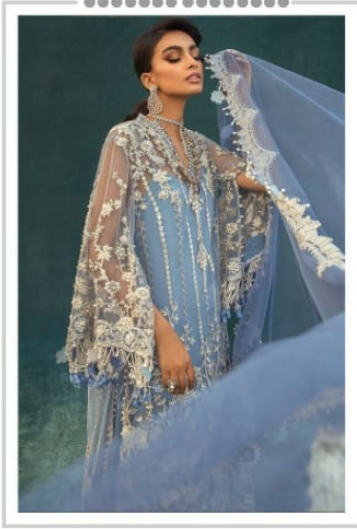
#R-354



TOP- FOX GEORGET WITH HEAVY EMBROIDERY
BOTTOM- DULL SANTOON
DUPATTA - NAZMEEN WITH HEAVY EMBROIDERY

- Ⓟ DRY CLEAN ONLY.
- ⓧ DO NOT USE ANY BLEACH OR STAIN REMOVING CHEMICAL.
- ☎ IRON THE FABRIC AT MODERATE TEMPERATURE.

Ramsha®
VOL-22



#R-351



#R-352

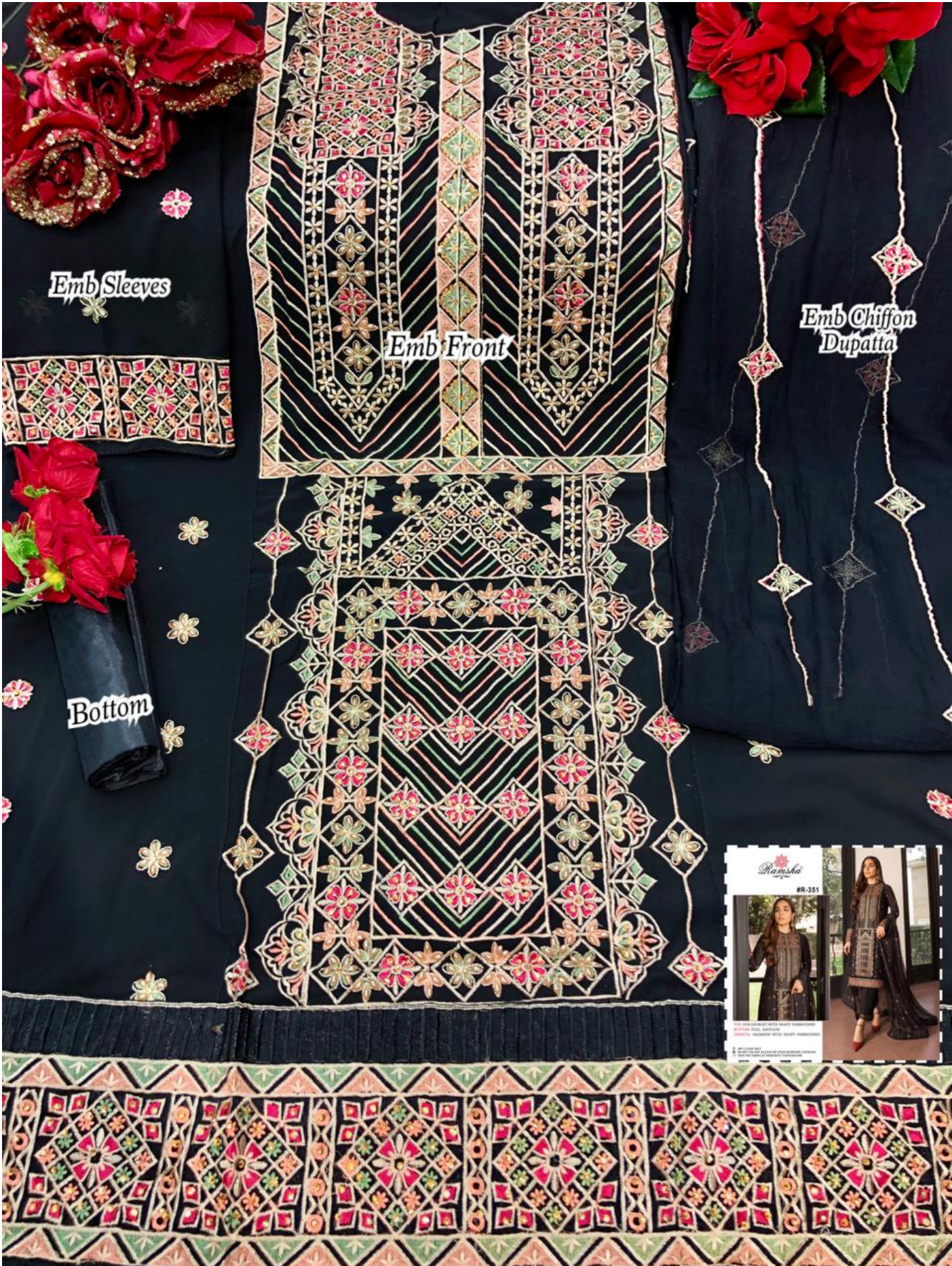


#R-353



#R-354

Ramsha®
VOL-22



Emb Sleeves

Emb Front

Emb Chiffon Dupatta

Bottom



Rangshu

#R-351

Material	100% Cotton
Color	Black
Length	Full Length
Width	42-44
Weight	1.2kg
Country of Origin	India



Emb Sleeves

Emb Front

Emb Net Dupatta

Bottom



FOR SUITABLE USE WITH HEAVY BROIDERED
TOPS, FULL LENGTH
AND HEAVY BROIDERED
DUPATTAS
WE CAN ALSO PROVIDE YOU WITH
THE BEST QUALITY OF FABRIC



Emb Sleeves

Emb Front

Emb Net Dupatta

Bottom





Emb Sleeves

Emb Front

Emb Chiffon Dupatta

Bottom



Ramsha

#R-354

FOR AIR CIRCULATION WITH HEAVY EMBROIDERY
BOTTLE NECK BARDON
DENSITY - INCREASED WITH HEAVY EMBROIDERY

100% COTTON
100% POLYESTER
100% COTTON